




MSCV45 Mechanical Control Valve

The MSCV45, now available with patent pending Gator Technology, is a low pressure, full port, mechanical dump valve. It features balanced plug control trim with a quick opening characteristic. The MSCV 45's full port allows for high flow rates, and its soft seat design gives a consistent leak free shut off.

The MSCV 45 can be used for discharging liquid or gas from separators, treaters, knockouts or other vessels making it a great economical choice for a variety of low-pressure applications.

The Gator, sold exclusively through , is a patent pending spline mechanism that replaces existing "D" or keyed rotational connections that quickly wear out. The spline design eliminates slippage/slack, providing greater accuracy and precision.

Multiple Gator parts and accessories are available to fit a wide variety of configurations.

Specifications

Sizes: 2", 3" and 4"

Connections: Female NPT, Flanged

Body Type: Globe, Angle

Trim Characteristic: Quick Open

Trim Size: Full Port

Trim Type: Balanced

Pressure Rating:

500 psi - 2" NPT

250 psi - 2" Flanged

250 psi - 3" & 4" Flanged & NPT

Temperature Range: -20° F to 400° F

Materials:

Body and Bonnet: Ductile Iron

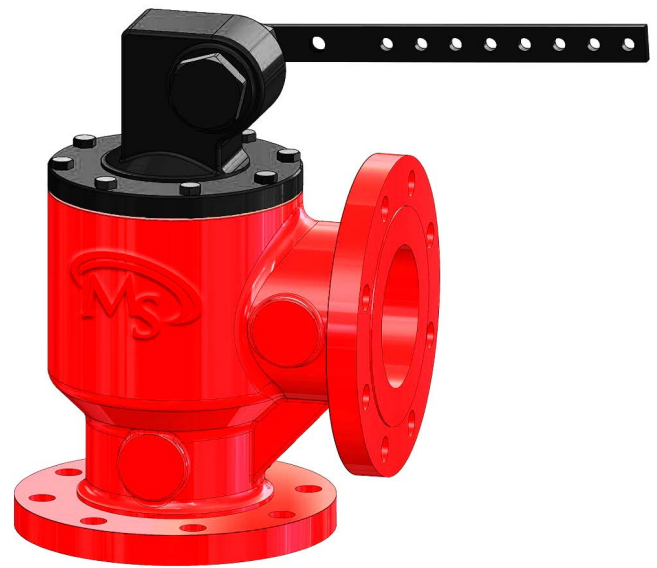
Plug: 304 SST

Seat: SST

Stem: 304 SST

Shaft: Gator Spline, 304 SST

Bolting: A193 B7



The Gator Method

Gator utilizes spline teeth to increase contact area on the MSCV 45 and level control rotational connections. The spline teeth

eliminate all slippage/slack in the system and maintain the correct angles for perfect timing and proper closure/



Traditional Method

Conventional trunnion and dump valve assemblies typically utilize D-shaped, cotter pin or keyed rotational connections to transmit torque. Accuracy is a major problem with these

designs due to rotational slack/slippage created by normal wear, causing incorrect timing and incomplete

closure/opening of the dump valve.



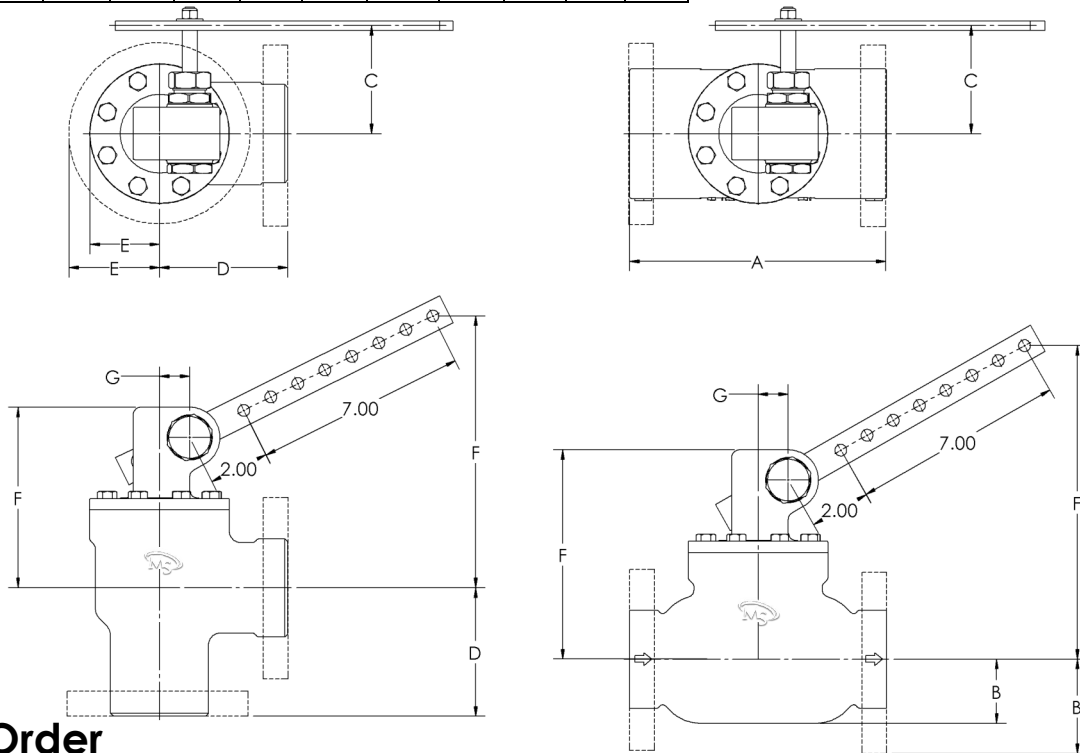
MSCV						
Size	2" (.623 Lift)		3" (.664 Lift)		4" (.78 Lift)	
Body	Globe	Angle	Globe	Angle	Globe	Angle
Full Port	53.2	62.4	112.8	123	182	179.4

Dimensions & Weights

Valve Dimensions											
Body Size	End Connection	Globe					Angle				
		A	B	C	F	G	C	D	E	F	G
2"	NPT	8.50	2.13	3.57	10.38	1.00	3.57	4.25	2.31	10.38	1.00
	150 RFF	9.00	3.06	3.57	10.38	1.00	3.57	4.25	3.06	10.38	1.00
3"	NPT	12.00	3.00	3.60	11.74	1.39	3.60	5.50	3.00	11.74	1.39
	150 RFF	12.19	3.88	3.60	11.74	1.39	3.60	5.50	3.88	11.74	1.39
4"	NPT	15.00	3.75	3.78	15.48	1.39	3.78	6.50	3.56	15.48	1.39
	150 RFF	15.13	4.50	3.78	15.48	1.39	3.78	6.50	4.50	15.48	1.39

End Connection	Valve Weights											
	2"				3"				4"			
	Globe		Angle		Globe		Angle		Globe		Angle	
	lbs	kg	lbs	kg	lbs	kg	lbs	kg	lbs	kg	lbs	kg
NPT	28	13	22	10	60	27	46	21	100	45	77	35
150 RFF	36	16	31	14	75	34	60	27	114	52	90	41

F = Dimension with valve in closed position.



How to Order

Example Model No. **MSCV-2NGR-VR**

MSCV Series Mechanical Dump Valve, 2" Globe Body, Threaded Ends, Teflon Seat, Full Port, 12" Lever.

Body Size	2 - 2"	3 - 3"	4 - 4"
Connection	N - NPT	F - RFF	
Body Type	G - Globe Body	A - Angle Body	
Seat Material	T - Teflon		
Trim Size	F - Full Port		
Gator Lever Length	12 - 12" (Standard)	18 - 18"	24 - 24" 36 - 36"

MSCV45 - 2 N G T F - 12



MARIA LOURDES
CABALLERO 5319
COLONIA ANDRES
CABALLERO ESCOBEDO,
NUEVO LEON 66080
011528183983450
011528183983153